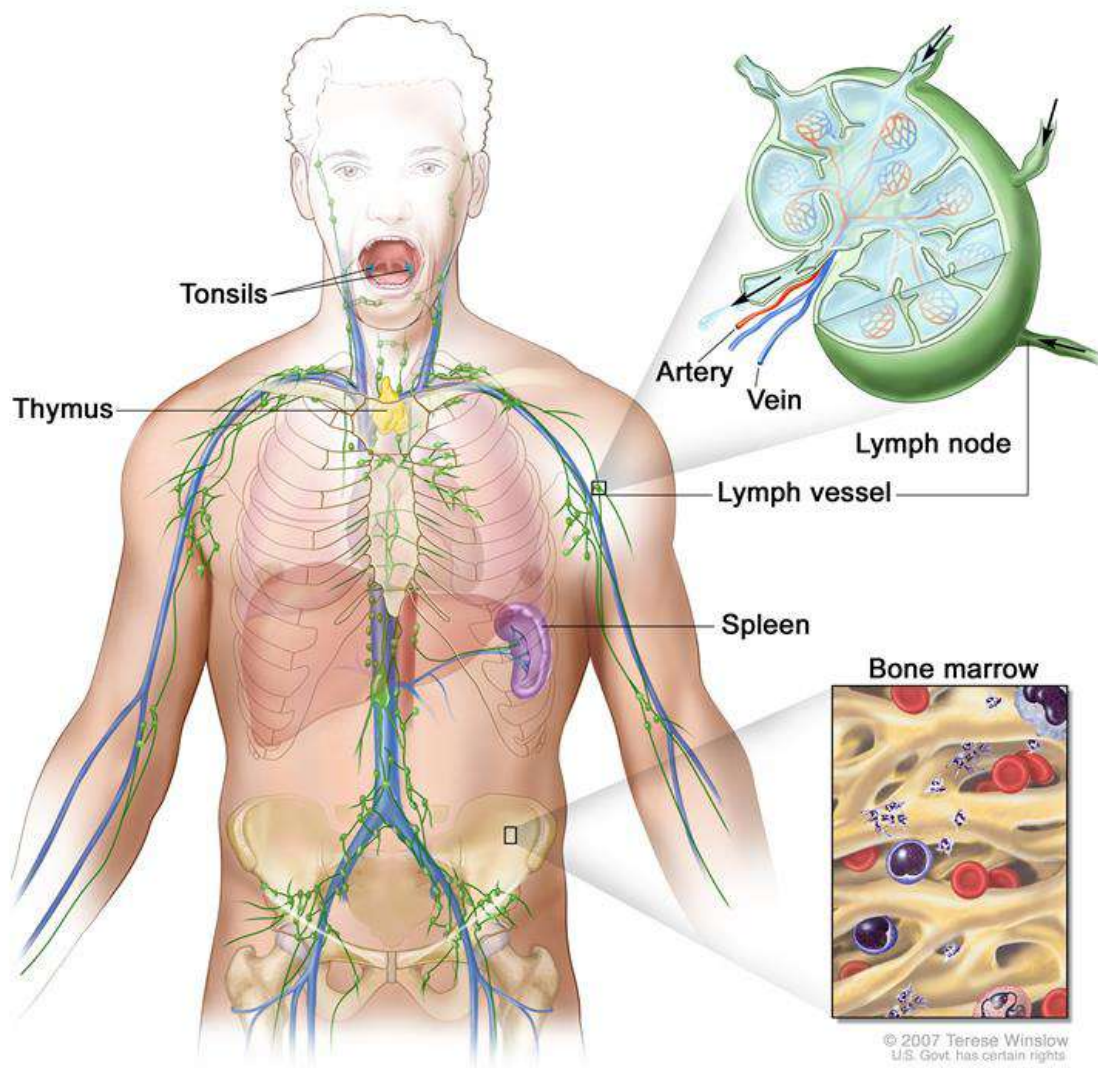


# LYMPHATIC SYSTEM

“Lymph nodes are a small bean-shaped structure that is part of the body’s immune system. Lymph nodes filter substances that travel through the lymphatic fluid and they contain lymphocytes (white blood cells) that help the body fight infection and disease. There are hundreds of lymph nodes found throughout the body. They are connected to one another by lymph vessels. Clusters of lymph nodes are found in the neck, axilla (underarm), chest, abdomen and groin. For example there are about 20-40 lymph nodes in the axilla. Also called a lymph gland.”



© 2007 Terese Winslow  
U.S. Govt. has certain rights

SOURCE: [www.cancer.gov/publications](http://www.cancer.gov/publications):